



Global Product Range

Innovative solutions
for a safer future





Worldwide Safety Experts

Safety regulations vary around the world. At Highway Care, we understand the diverse compliance requirements, road layouts, and vehicle usage patterns in different locations around the world.

As experts in road safety, we know there's no one-size-fits-all approach; what works in one region may not be appropriate in another. That's why we work with in-country partners around the world to ensure you can always trust us to provide timely, compliant, and robust safety support, wherever projects may be.



www.highwaycare.com

HighwayGuard™ Portable Steel Barrier

HighwayGuard™ is an innovative MASH 16 TL-3 & TL-4 compliant portable steel barrier, developed to provide a secure work zone for road workers and improve safety for road users. It is also a semi-permanent or permanent barrier solution.



Accepted for use by authorities across North America and Australasia, as well as being specified in other territories, HighwayGuard™ has been designed for versatility, ease, and speed of installation. It is a two-part system comprising a symmetrical barrier and a universal T-connector for ease of configuration and rapid connection and disconnection.

Suitable for use as a Minimum Deflection System (MDS), Lower Deflection System (LDS) or Standard Deflection System (SDS) using the same barrier sections and T-connectors, HighwayGuard™ only requires changes to the anchoring arrangements to meet site-specific deflection specification requirements. It is the world's lowest deflecting portable barrier, enabling you to deliver the highest possible safety standards for road users, whilst maximising and protecting the available work area.

Features & Benefits

→ **Meets the latest standards** – MASH 16 TL-3 and TL-4 tested and accepted.

→ **Reduces your operational cost and resource** – lower transport costs with up to 252m of barrier on each load. Rapid installation and removal thanks to our patented T-connector and symmetrical barrier, which can also reduce the project's barrier requirement.

→ **Easy configuration** – for tight geometries, such as intersections and roundabouts, angle T-connectors/barrier are available. Optional internal or external wheelsets enable easier barrier opening and movement.

→ **Maximises your working space** – space efficient with a section width as small as 0.25m up to a maximum width across the trafficable foot of 0.54m. The Lower and Minimum Deflection Systems are ideal for work environments with restricted space.

→ **Extended service life** – with a 20+ years lifespan and a tested connection to our BG800® portable steel barrier.

Tested Connection to BG800®:

HighwayGuard™'s tested and accepted connection to our BG800® portable steel barrier, allows seamless integration with existing BG800® inventory, maximising the value of your existing fleet. This supports a smooth transition, enabling a smooth progression from BG800® to HighwayGuard™ while you continue to use your existing assets.

Rapid Opening using Internal or External Wheels:

It's fast and simple to create work zone access points or open sections for emergency access with HighwayGuard™ because the barrier can be split quickly along its length using pre-positioned internal wheelsets or innovative external wheelsets. This unique capability removes the need for specialist lifting equipment and provides a clear operational advantage.

- Faster, safer access for plant, crews and emergency vehicles
- Reduced disruption on site
- Reduced plant, lowering people /plant interface risk
- Reduced operational costs for unplanned barrier removals

Technical Specification	
Module Length	6.00m
Module Weight	552kg
T-Connector weight	43kg
System Weight	99kg/m



BG800[®] Portable Steel Barrier

Designed to protect both road users and road workers, BG800[®] is a high performance barrier able to withstand multiple impacts.



BG800® features a unique stepped profile, which is proven to reduce damage to both vehicles and the barrier upon impact, minimising the need for repair or replacement. Tested to MASH TL-3, NCHRP 350 TL-3 & TL-4 and EN1317-2 H2, the system also provides an extremely shallow exit angle for vehicles during impact, reducing the risk of secondary road accidents.

BG800® requires up to five times fewer trucks for transportation as compared to traditional concrete barrier solutions.

At only 90kg per metre, the lightweight system is ideal for use on structures with weight limits, such as projects that involve protecting a bridge parapet, for example.

Thanks to its optional wheeled sections, which allow for movement of the barrier, BG800® is also ideal for movements in restricted spaces where lifting may not be possible, such as tunnels. It is also ideal for repetitive regular maintenance operations.

Features & Benefits

→ **Exceptional safety** – up to MASH TL-3, NCHRP 350 TL-3 & TL-4 and EN1317-2 H2 containment levels.

→ **Rapid deployment** – easy to install, thanks to a unique connector design, which allows installation of up to 300 metres per hour.

→ **Flexible configuration** – with 6 and 12 metre section lengths, special angle sections for protection around junctions and roundabouts, and optional radius sections, fence panels, wheeled, and gate sections, the system can be adapted to any requirement.

→ **Low whole life costs** – 20+ year lifespan and a tested connection with HighwayGuard.

→ **Suitable for security deployment** – also available as a compliant security system, tested to PAS68:2010, making it suitable for use close to the road network, keeping road users safe.



Technical Specification	
Length	6m or 12m sections
Height	800mm (or 915mm if used with T-Top)
Width	540mm
Weight	90kg per metre (or 135kg/m if used with T-Top)

BG800[®] Gate

The BG800[®] Gate is a safety barrier gate that can be installed within other vehicle restraint systems, enabling emergency access points or maintenance access points without compromising the integrity of the barrier.



The BG800® Gate can be opened within 2 minutes, without the need for power tools. This modular system uses independent gate post anchoring to the foundations which means that no loads are passed to the connected barrier systems.

Features & Benefits

→ **Maximum safety** – NCHRP 350 TL-3 compliant with a maximum deflection of 1.1m.

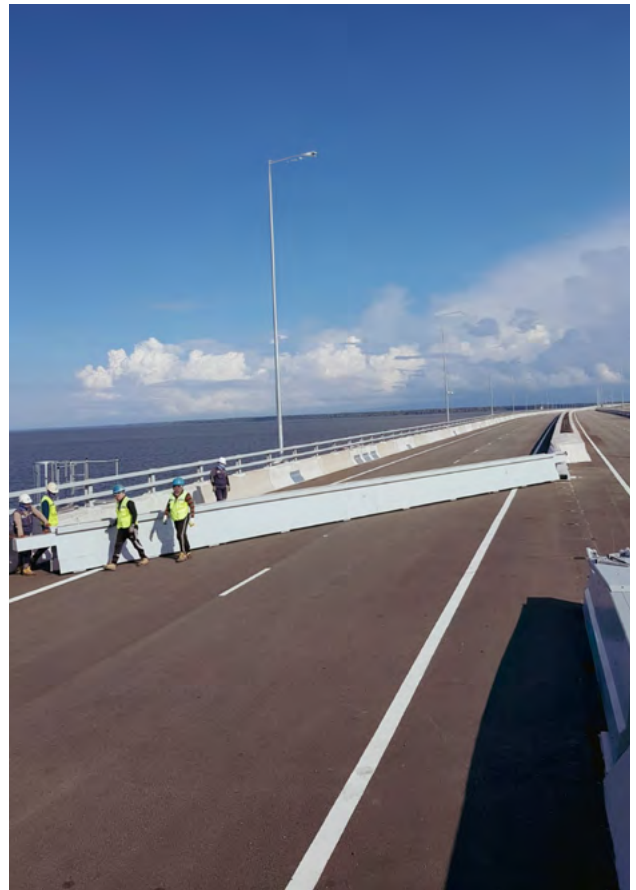
→ **Ease of integration** – connections available for both concrete and guardrail systems to connect seamlessly with existing infrastructure.

→ **Industry-leading flexibility** – multiple opening arrangements and custom-specified options to meet project-specific requirements.

→ **Excellent build quality** – a durable system with a 20+ year lifespan and low maintenance requirements.

→ **Operational efficiency** – rapid opening and Extrathane® polyurethane castor wheels for multi-directional movement.

Technical Specification	
Gate length	6m-36m (up to 50m bespoke gate option)
Height	800 or 915mm
Width at base	540mm
Width at top	240 or 474mm
Weight per metre	135kg



ArmorWire™

ArmorWire™ is a high-tension cable barrier with unique oval-shaped steel posts, which mitigates the risk of sand buildup, making it ideal for use in desert and coastal areas.



Requiring very few components, it is the easiest system of its kind to install. Slots within each post house 3 or 4 barrier cables at the required height and each post also has a socketed concrete footing.

Crash tested to MASH TL-3, TL-4 and EN1317-2 H2, the system allows an impacting vehicle to be redirected in a safe and predictable manner, delivering reliability and exceptional performance using minimal inventory.

Features & Benefits

→ **Exceptional safety** – the system is accepted to MASH TL-3, TL-4 and EN1317-2 H2. The oval post design offers higher protection to vulnerable users while 19mm 3×7 strand cables (pre-stretched by 35%), and concrete with a 25 mpa minimum strength, ensure a robust system, that is highly effective at minimising any sand build-up.

→ **Versatile and adaptable** – 3 and 4 cable options enable specification to meet individual project needs, with a socketed system and post spacing between 2m and 6m. The system enables run lengths of up to 5000m, making the it suitable for major infrastructure projects.

→ **Suitable for demanding environments** – all posts are hot-dip galvanised to EN1461 (with optional powder coating) for durability and resilience.

Technical Specification	
Max height	872mm
Post width	97mm
Cable heights (3 cable)	530 650 770mm
Cable heights (4 cable)	530 650 770 790mm



ArmorZone™

Fully compliant with MASH TL-1 & TL2 and 100% recyclable, ArmorZone™ is a multi-purpose, high-performance barrier designed to enhance safety for both road workers and road users, by protecting the works area.



Engineered to reduce impact forces, ArmorZone™ has been rigorously crash tested to 70km/h as a longitudinal barrier with built in terminal ends, suitable for use within work zones. Upon impact with a range of vehicles, ArmorZone™ safely redirected them from impact angles up to 25° and speeds up to 70 km/h. ArmorZone™ can be deployed straight or with low curvature, on either roadside or median applications. The ArmorZone™ barrier carries many advantages including high durability, high performance, faster, safer installation, excellent sustainability credentials and at a very competitive cost.

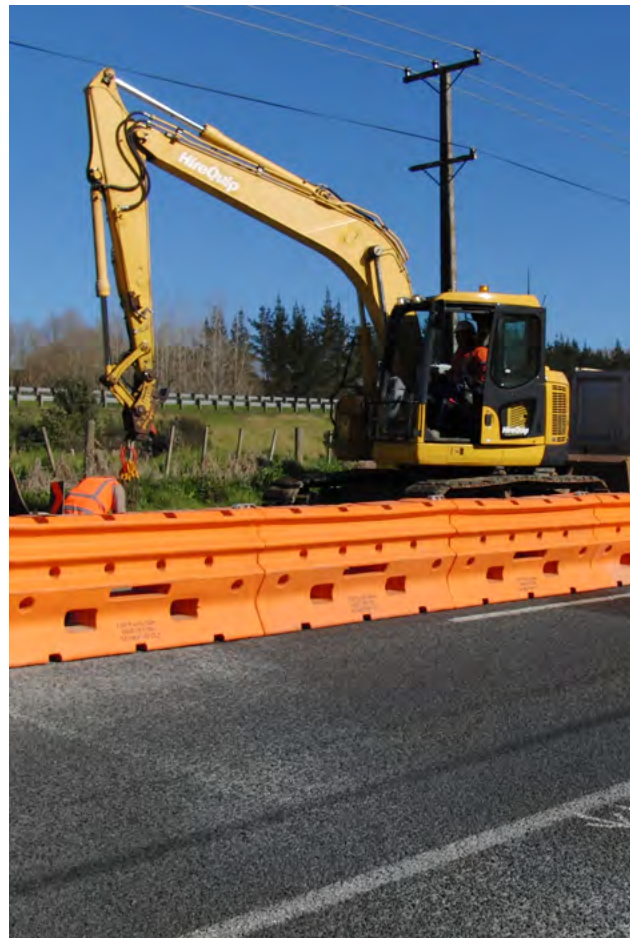
Features & Benefits

→ **Easy to transport and install** – MASH TL-1 and TL-2 compliant, the water-filled nature of the ArmorZone™ barrier simplifies its deployment and transportation while increasing safety during the installation process, as the empty barriers weigh just 56kg and can be easily handled by two operatives. The deployment process involves interlocking the 2m long units with a unique connecting pin and filling each barrier with 440L of water.

→ **Reduced cost and environmental impact** – Container “friendly” dimensions allow for effective shipping (84 units fit in a 40’ container), 100% recyclable and are manufactured with up to 10% plastic from decommissioned ArmorZone™ barriers.

→ **Exceptional safety** – Excellent work zone barrier protection, exceptionally good vehicle control and low deflection.

Technical Specification	
Length	2000mm
Height	860mm
Width	450mm
Weight	56kg (496kg when full)
Water required	440L (per 2m section)
Deflection	2.1m (50 km/h)/4.1m (70 km/h)
Leading point of need	24m
Minimum length of need	50m
Material	HD Stabilised PE (UV8)
Connecting pin	Galvanised Steel



Manufactured using up to 10% recycled plastic sourced from decommissioned ArmorZone™ barriers and every barrier is 100% recyclable at end of life.

RAPTOR™

RAPTOR™ is a MASH TL-1 compliant, bi-directional, non-redirective crash cushion with exceptional energy-absorbing capabilities, which reduce the consequences of vehicle collisions with utility poles, trees, or other single-point hazards.



Approximately 30% of run-off-road fatalities involve severe impacts with hard objects such as poles and trees. Removing or relocating these hazards may not be possible, so using Raptor reduces the impact severity for vehicle occupants in the event of a collision.

Installation and any repairs following an impact can usually be carried out in less than 30 minutes.

Features & Benefits

→ **Compliant** – meets MASH TL-1 (2,270kg pickup, 50kph head-on) criteria for non-redirective crash cushions.

→ **A practical solution** – with no foundations or anchoring required, installation typically takes less than 30 minutes.

→ **Robust and resilient** – the fully galvanised steel connector and fixings ensure durability and resilience. The UV-resistant plastic unit is fire and vandal resistant.

→ **Improved service life and sustainability** – the unit has a 25+ service life and can usually be repaired and redeployed following an impact. Any non-reusable components are fully recyclable, and the non-impacted side can be re-used following a collision.

→ **Attractive** – Raptor™ can be provided in a range of colours to coordinate with the location, but is typically ordered in black or yellow.



Technical Specification	
Overall Length	2460mm 2760mm
Height	1050mm
Width	1150mm
Weight (per shell)	110kg
Weight (per packet)	12kg
Void size width	590mm
Void size length	300mm 600mm

SecureGuard

SecureGuard is a range of high-performance Hostile Vehicle Mitigation (HVM) barrier systems, designed to provide robust “ring of steel” perimeter protection.

Available in temporary and permanent configurations, SecureGuard systems are impact tested to international standards and engineered to stop, contain and immobilise vehicles on impact. Based on the BG800® barrier system, when used next to roads the road safety benefits offered are retained for accidental collisions. The systems are designed for rapid installation, minimal disruption and long-term reliability, supporting protective security and counter-terrorism requirements across a wide range of sites.



SecureGuard 20, 30 and 50

SecureGuard is available in 32, 48 and 80 km/h (20mph, 30mph and 50mph) impact rated versions. Each system offers a distinct level of performance, installation method and suitability, allowing selection of the appropriate solution based on site risk and operational needs.

Offering rapid deployment with minimal disruption, the system can be re-deployed and reconfigured quickly and easily, as and when required.

SecureGuard 20

SecureGuard 20 is an anchored HVM barrier system, designed for rapid deployment.

- Impact rated to 32 km/h (20 mph)
- Barrier-only solution
- Can be installed on existing road pavements
- Suitable for temporary or permanent applications

SecureGuard 30

SecureGuard 30 is an anchored HVM barrier system, incorporating a rear steel cable to enhance vehicle containment and energy absorption.

- Impact rated to 48 km/h (30 mph)
- Anchored installation with shallow foundations supports fencing and gate options, enabling an integrated perimeter solution
- Rear cable system increases system strength and resilience
- Suitable for permanent or longer-term applications
- Widely deployed as permanent perimeter protection at airports

SecureGuard 50

SecureGuard 50 delivers the highest level of impact protection in the range.

- Impact rated to 80 km/h (50 mph)
- Anchored installation supports fencing and gate options, enabling an integrated perimeter solution
- Designed for permanent, high-security environments

Technical Specification
SecureGuard 20
90° impact 32 km/h 20 mph
45° impact 48 km/h 30 mph
SecureGuard 30
90° impact 48 km/h 30 mph
SecureGuard 50
90° impact 80 km/h 50 mph

Testing & Certification

SecureGuard is rated to a combination of IWA 14-1:2013, PAS 68:2010, PAS 68:2007 or PAS 68:2005



SecureGuard Access Solutions

SecureGuard is supported by a range of impact-tested access solutions, ensuring secure access is maintained without compromising perimeter integrity.



To enable entry points without compromising SecureGuard's "ring of steel" perimeter protection, the system can be installed with a choice of controlled access points:

- Vehicle access gates
- Pedestrian portals

These elements integrate seamlessly with temporary and permanent SecureGuard installations, creating a complete HVM system.

SecureGuard Vehicle Access Gate

A cost-effective option for temporary or permanent perimeter security, SecureGuard Access gates enable you to install designated vehicle access points without compromising the "ring of steel".



SecureGuard Pedestrian Portal

The SecureGuard Pedestrian Portal provides controlled pedestrian access through a HVM perimeter and is compatible with both SecureGuard 20 and 30 systems.

- Freestanding, surface-mounted design for rapid deployment on hard or soft ground
- Modular, galvanised steel, anti-tamper construction
- Supports high footfall, including 1.2 m clear opening for disabled access
- Available as a single portal or paired units for wider access

Testing & Certification

Rated to BSI PAS 68: 2013
Single V/7500(N2)/48/90:2.0/0.0
Pair V/7500(N2)/48/90:1.4/0.0

Innovative solutions for a safer future

We are experts in protecting people and places around the world.
You can rely on us for:

- Market-leading solutions
- Technical knowledge
- Responsive customer service

 +44 (0)344 840 0088

 info@highwaycare.com

 www.highwaycare.com



Highway Care is proudly part of Ramudden Global.